

FIRE SAFETY ON THE NORTH SONOMA COAST



TOPICS

- Emergency Services On The Coast
- CAL FIRE 2025 Fire Season Outlook
- What is Defensible Space?
- 2026 Sonoma County Multi-Jurisdictional Hazard Mitigation Plan (MJHMP) Update
- Measure H Funds
- North Fire Station Plans
- Q & A

SPEAKERS

- **NSC Fire Chief Bonnie Plakos**
- **CAL FIRE Captain Red Miller**
- **CAL FIRE Captain Chris Tholcke**
- **Doug Thompson, Thompson Studio Architects**

WHO RESPONDS TO EMERGENCY CALLS?

- North Sonoma Coast Fire (NSCFPD)
- CAL FIRE
- Coast Life Support District (CLSD)
- Air Ambulances (REACH, CalSTAR, CHP H30, Sheriff's Henry 1)
- Sonoma County Sheriff
- California Highway Patrol
- Mutual Aid: Timber Cove Fire, Fort Ross Fire, South Coast Fire (Gualala), Northern Sonoma County (Geyserville)

WHERE IS NSCFPD?

- The Fire District that covers the Sea Ranch, Stewarts Point, and Annapolis areas
- 172.4 Square Miles



WHO IS NSCFPD?

- 14 volunteer firefighters and/or EMTs and 3 support members
- 9 CAL FIRE contract personnel, minimum of 3 on duty 24x7
- Fire Chief Bonnie Plakos
- Assistant Fire Chief Chuck Breier
- Fire Captains Paul Plakos, Phil Martin
- CAL FIRE Captains Red Miller, Pat Briant, Keith Martinson; 6 Engineers
- District Board has 5 members, elected by you!

NORTH SONOMA COAST VOLUNTEER FIREFIGHTER ASSOCIATION

- Our associated 501(c)(3) nonprofit
- Formed in 1973
- Owns and maintains the North Fire Station on Highway 1.
- Provides equipment, training, clothing, or anything needed by the volunteer firefighters
- Sponsors Memorial Weekend picnic, Christmas Tree sales
- VFA Board has 5 members



NSCFPD RESPONDERS



CAL FIRE STATE MISSION CREW

- CAL FIRE “Schedule B” crew stationed on Sea Ranch
- Responds to local events
- May respond anywhere in State Responsibility Area (SRA)
- Crew of three



NSCFPD APPARATUS



NSCFPD STATIONS



NSCFPD INFORMATION

- NSCFPD contracts with CAL FIRE for 24x7 coverage
- NSC Volunteers and CAL FIRE respond together as one fire department
- CAL FIRE also provides operational administration, training, inspections, vehicle maintenance...
- Funding sources are ad valorem property taxes, Measure H sales tax, donations (through NSCVFA), and sometimes rental revenue

COAST LIFE SUPPORT DISTRICT (CLSD)

- Ground ambulance response
- Two Advanced Life Support (one Paramedic and one EMT) ambulances staffed 24x7
- Located in Gualala next to RCMS
- Response area from Fort Ross to Irish Beach, ~700 sq. miles
- <http://clsd.ca.gov>



AIR AMBULANCES / HELICOPTER RESCUE



CAL FIRE 2025 SEASON OUTLOOK

- Welcome to 2025 fire season
- Cooler than average this year so far
- 44" Sea Ranch rain Nov 2024 to March 2025
- Light flashy fuels tall and dry
- Early July lightning northeast of us (with rain)
- Sea Ranch fire season typically starts in October (high fire danger)



CAL FIRE 2025 SEASON OUTLOOK

- Statewide fire activity can be seen at <https://www.fire.ca.gov>
- 3D maps
- Most of the structure loss and fatalities due to Palisades fire
- (stats as of 7/18/25)



SONOMA LAKE NAPA (LNU) UNIT EQUIPMENT AND RESOURCES AVAILABLE

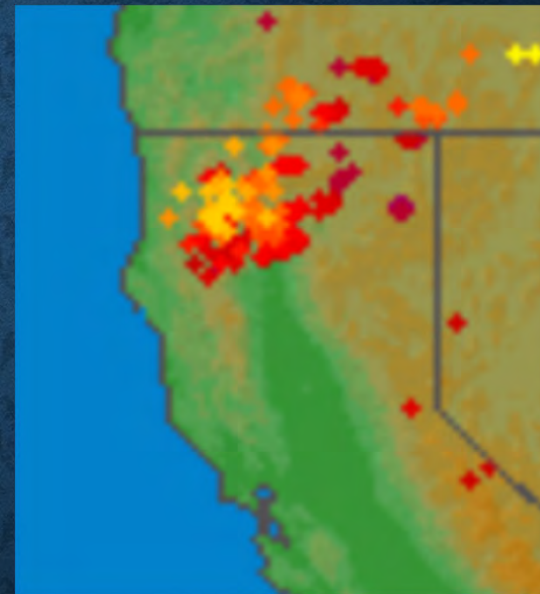
- Six bulldozers
- 7 hand crews
- Two air tankers
- One air attack
- 2 CWN helicopters
- One Blackhawk helicopter
- 31 engines
- Many other resources available statewide
- Many Local Government Resources
- *Mutual aid depends on other fire activity



CAL FIRE 2025 SEASON OUTLOOK

Overall outlook for rest of the summer (Captain Miller's Crystal Ball)

- With the exception of dry lightning storms, and/or major hot dry wind events, should be a relatively moderate fire season locally.



12611 lightning strikes recorded within California 24 hours July 2 – 3, 2025

WAYS FOR YOU TO HELP US HELP YOU

- Evacuation warning VS order
- If we are having to evacuate people, then we have fewer resources to suppress the fire
- TSR has only main 3 roads in/out
- Evacuation tags



KNOW YOUR EVACUATION ZONE

Know your zone: <https://socoemergency.org/get-ready/evacuation-map/>

Find your Zone – Two Ways

Please Note: Zones may change slightly from time to time. Please review your zone regularly.

1. Use the Zone Lookup Tool

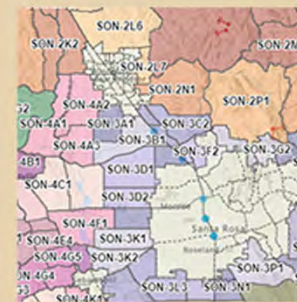
Enter your address into the field provided below to find your zone and evacuation status.

Enter your Address:

2. Use the County's interactive Evacuation Zone Map

Enter your address in the field in the top left corner to find your zone, evacuation status, road closures, and more.

[See the County's Evacuation Zone Map »](#)



KNOW YOUR EVACUATION ZONE

- Example: Entered address of the Del Mar Center
- Will give name and description of evacuation zone
- Will have a link to a detailed zone map

Enter your Address:

Search Results

40600 Leeward Rd, The Sea Ranch, California, 95497

- **Zone SON-1A1**
- **Status:** Normal
- **North Sea Ranch**
 - North of Annapolis Road and the Moonraker Recreational Center
 - South of the Mendocino County line
 - East of the coastline
 - West of the south fork of the Gualala River

[Zone SON-1A1 Map \(PDF\)](#)

KNOW YOUR EVACUATION ZONE

- Map of zone
SON-1A1



KNOW YOUR EVACUATION ZONE

Know your zone: <https://socoemergency.org/get-ready/evacuation-map/>



WAYS FOR YOU TO HELP US HELP YOU

Wildfire Action Plan: <https://cal-fire-communications.paperturn-view.com/cal-fire-ready-set-go-brochure-final-files-v4-print?pid=MjU252417&v=3>

Ready-Set-Go Video: <https://youtu.be/dcf8FRAqUww>



CAL FIRE: DEFENSIBLE SPACE

- PRC 4291, LE-100
- How we evaluate structures
- Average vs. extreme fire behavior
- Likely direction of fire travel
- Topographical location

State of California, Natural Resources Agency
Department of Forestry and Fire Protection
Notice of Defensible Space Inspection
D-100a (04/21)

Inspection Date: _____

NOTICE OF DEFENSIBLE SPACE INSPECTION

A fire department representative has inspected your property for fire hazards.

OWNER/TENANT:	INSPECTION ADDRESS:
INSPECTOR NAME:	CONTACT NUMBER:
Inspection No. <input type="checkbox"/> <input type="checkbox"/> <input type="checkbox"/> <input type="checkbox"/>	No. Violations Observed <input type="checkbox"/>

Zone 1 / Within 30 feet of all structures or to the property line (Refer to illustration below):

- A. Remove all branches within 10 feet of any chimney or stovepipe outlet.
- B. Remove leaves, needles or other vegetation on roofs, gutters, decks, porches, stairways, etc.
- C. Remove dead tree or shrub branches that overhang roofs, below or adjacent to windows, or which are adjacent to wall surfaces.
- D. Remove all dead and dying grass, plants, shrubs, trees, branches, leaves, weeds and needles.
- E. Remove or separate fuels to maintain spacing between vegetation to interrupt the fire's path. Prune limbs, separate plants and ground cover.
- F. Remove flammable vegetation and items that could catch fire which are adjacent to, or below, combustible decks, balconies, and stairs.
- G. Relocate exposed wood piles outside of Zone 1 unless completely covered in a fire-resistant material.

Zone 2 / Within 30-100 feet of all structures or to the property line:

- H. Cut annual grasses and forbs down to a maximum height of 4 inches.
- I. Remove fuels to create proper horizontal and vertical spacing among shrubs and trees, and remove lower tree limbs (see diagrams on back).
- J. All exposed wood piles must have a minimum of 10 feet clearance, down to bare mineral soil, in all directions.
- K. Remove all dead and dying trees, branches, shrubs, or other plants, and surface debris. Loose surface litter, consisting of fallen leaves or needles, twigs, bark and cones, shall be permitted to a depth of 3 inches.

Other Requirements / Within 100 feet of all structures or to the property line:


- L. Logs or stumps embedded in the soil must be removed or isolated from other vegetation.
- M. Outbuildings and Liquid Propane Gas (LPG) storage tanks shall have 10 feet of clearance to bare mineral soil and no flammable vegetation for an additional 10 feet around their exterior.
- N. Address numbers shall be displayed in contrasting colors (4" min. size) and readable from the street or access road.
- O. Equip chimney or stovepipe openings with a metal screen having openings between 3/8 inch and 1/2 inch.

IMPORTANT If any of the boxes are checked above you are hereby notified to correct the violations indicated above. The owner/tenant's failure to correct these violations may result in a citation and fine.

COMMENTS:

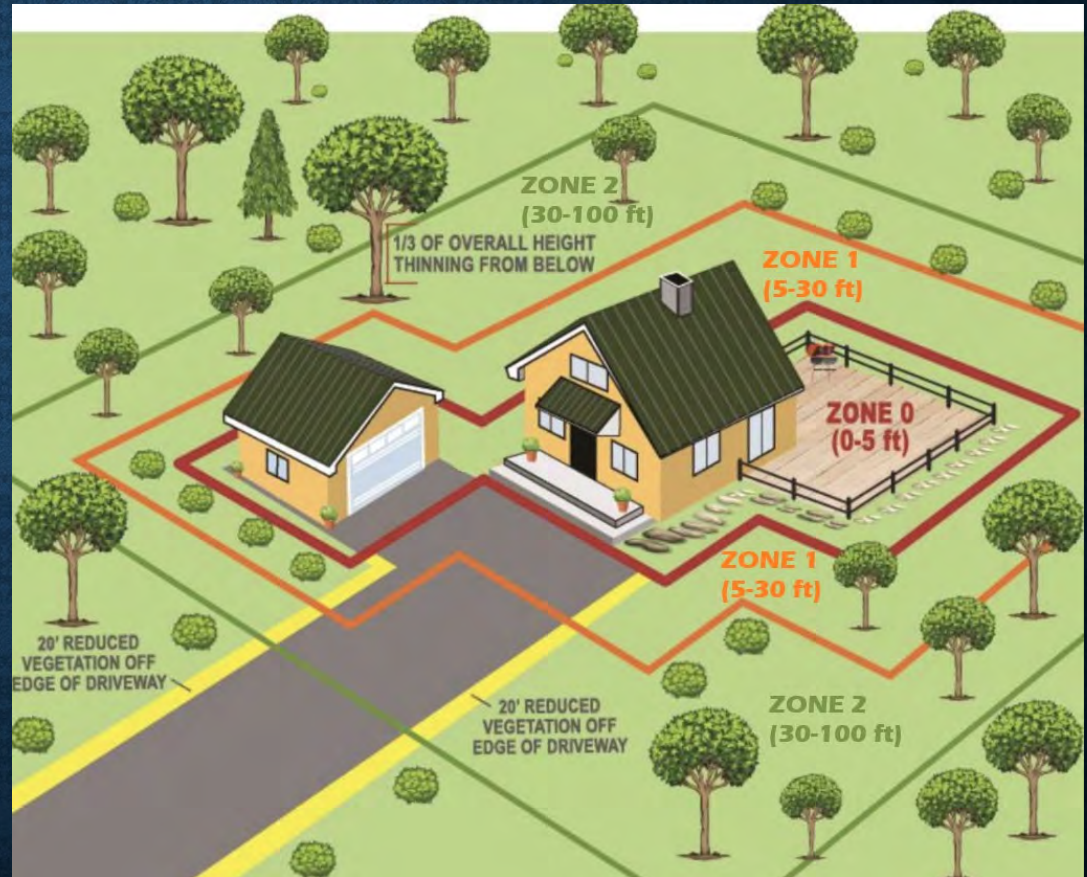
REINSPECTION DATE ON OR AFTER: _____

KNOW THE LAW BE FIRE SMART
100 feet of Defensible Space is required by law. Regulations can be found in 14 CCR § 1299.03, PRC § 4291, BOF General Guidelines, CFC § 503.1, CBC § 2113.9.2. California Building Code Chapter 7A requires certain construction materials and methods for homes in wildland areas. Contact your local fire department for additional requirements to ensure your home is compliant with the law. For more information on laws and codes go to: READYFORWILDFIRE.ORG/THELAW
PRC § 4119. The department, or its duly authorized agent, shall enforce the state forest and fire laws. The department may inspect all properties, except the interior of dwellings, subject to the state forest and fire laws, for the purpose of ascertaining compliance with such laws.



CAL FIRE: DEFENSIBLE SPACE

- Zones
- 0= 0 to 5'
- 1= 0 to 30'
- 2= 0 to 100'
- Horizontal/vertical spacing



CAL FIRE: DEFENSIBLE SPACE

- What you can do to help..
- Have defensible space ahead of time
- Mow before 10AM during hot dry days.. don't be that guy.. or gal..
- If you do not have defensible space at your house, we will probably move on to houses that do
- Need to maximize our efforts to save the most houses
- What we are seeing on Sea Ranch

NSC/ CAL FIRE DEFENSIBLE SPACE PROGRAM

- Inspections done by NSC's CAL FIRE staff
- Work closely with CAL FIRE inspectors out of St Helena
- ~1900 homes, 600(ish) per year, every house at least once every 3 years
- Every house done last year
- Call the station if you want one sooner.. 707-785-2648
- Or any time you just want to discuss fire safety

CAL FIRE: DEFENSIBLE SPACE

- AB 38 Defensible Space Inspections / Selling a home
<https://www.fire.ca.gov/dspace>
- Depends on Fire Severity Zones

The intensity of wildfire fuel management varies within the 100-foot perimeter of the home, with more intense fuels' reduction occurring closer to your home. Start at the home and work your way out to 100 feet or to your property line, whichever is closer. Learn more about the Defensible Space Zones below.

**REQUEST A REAL ESTATE
DEFENSIBLE SPACE INSPECTION** [↗](#)



FIRE HAZARD SEVERITY ZONES

- Go here: <https://www.fire.ca.gov/dspace>
- Click on “Request a real estate defensible space inspection”, then on the link to the viewer

Request a CAL FIRE Real Estate Defensible Space Inspection

Use the [Fire Hazard Severity Zone Viewer](#) to find out if your property requires an inspection. Click the search icon located in top left of the viewer to enter your address. If your property is in the orange, pink or red zones, an inspection will be required when selling your property.

FIRE HAZARD SEVERITY ZONES



Fire Hazard Severity Zone Viewer

FHSZ in State Responsibility Area effective April 1, 2024

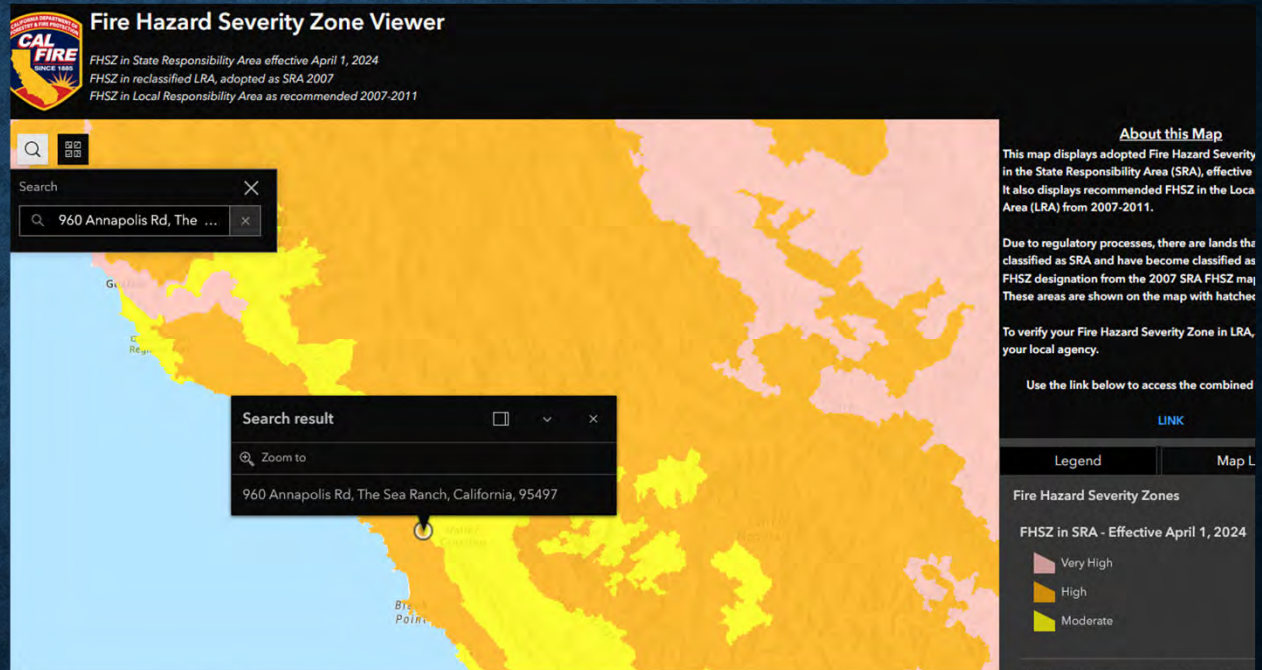
FHSZ in reclassified LRA, adopted as SRA 2007

FHSZ in Local Responsibility Area as recommended 2007-2011



FIRE HAZARD SEVERITY ZONES

- Sea Ranch is either High or Moderate
- AB38 inspections are required in High and Very High zones

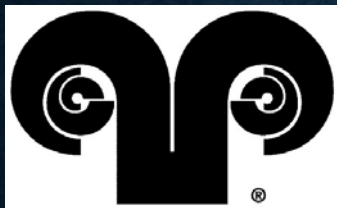


EMERGENCY ALERT SYSTEMS



- Sign up online at:
- <http://sonomacounty.ca.gov/FES/Emergency-Management/SoCoAlert/>
- Or call (866) 939-0911
- Sign up for outage alerts at
- <https://www.pge.com/en/account/manage-my-account/online-account-preferences/outage-alerts.html>
- Sonoma County can send alerts using the NOAA Weather Radio system
- Information about the system: <https://www.weather.gov/nwr/>

EMERGENCY ALERT SYSTEMS



TSRA
Emergency
Alert System

TSR Residents make sure TSRA has your contact info:

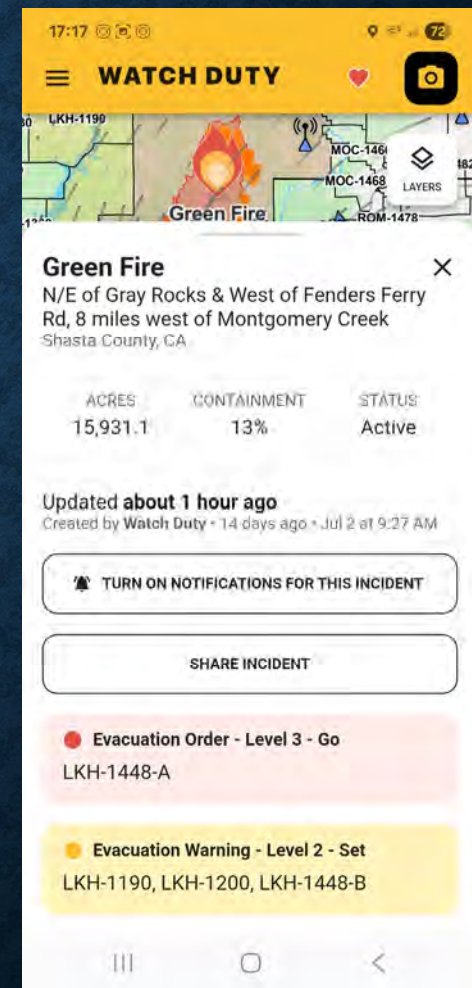
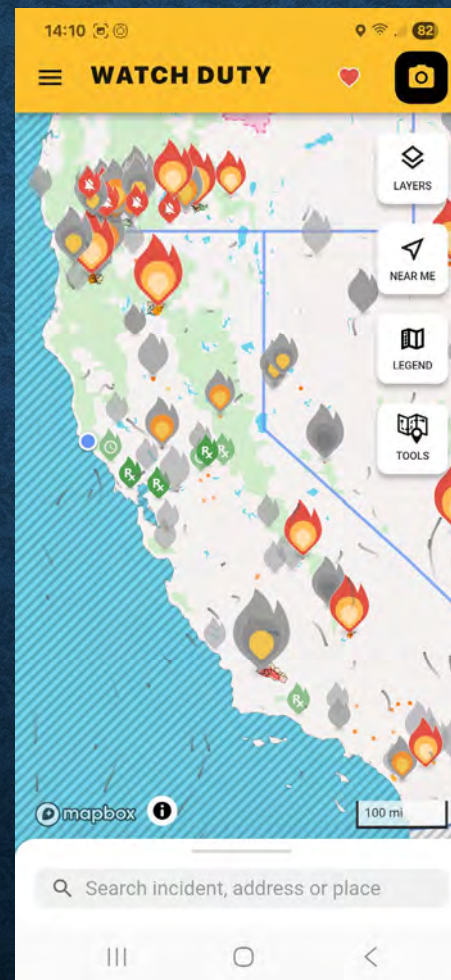
<https://www.tsra.org/member-contact-information-and-emergency-preparedness/>



- Sign up online at nixle.com
- Or text your zip code to 888777

WATCH DUTY

- Is a great source of information during an emergency
- Do not rely solely on WD (sign up for all systems!)
- watchduty.org



2026 SONOMA COUNTY MULTI-JURISDICTIONAL HAZARD MITIGATION PLAN UPDATE

- What is the “MJHMP” ?
 - Identifies potential hazards that a planning area is most vulnerable to
 - Assesses risk to populations, property, and critical facilities
 - Includes mitigation strategies to reduce risks
- Updated every 5 years (last was 2021)
- Projects must be in a plan to have any chance of grant funding
- Many county agencies participate, including NSCFPD, and our neighbor Timber Cove FPD.

2026 SONOMA COUNTY MJHMP UPDATE


- The 2021 MJHMP can be found at <https://permitsonoma.org/hazard-mitigation>
- Can find info about the 2026 update online by searching for “Sonoma County Multi-Jurisdictional Hazard Mitigation Plan”

Sonoma County Multi-Jurisdictional
Hazard Mitigation Plan - 2026 Update



NSCFPD.ORG HAS MJHMP INFO

North Sonoma Coast Fire Protection District GOVERNANCE ▾ ABOUT US ▾ PHOTO GALLERIES ▾ GET INVOLVED ▾

 ing the communities of Sea Ranch, Annapolis, and Stewarts Point

HOT NEWS
[NSC Board Opening Hazard Mitigation Plan Update](#)
[Fire Safety Forum July 19, 2025](#)

BE PREPARED!
[Know Your Evacuation Zone Emergency Information](#)

BURN INFO

SONOMA COUNTY HAZARD MITIGATION PLAN 2026

Every five years Sonoma County updates its “Multi-Jurisdictional Hazard Mitigation Plan” (MJHMP). [The last one was completed in 2021](#), and work is underway on the 2026 update. This will be a long and detailed project running through most of 2025. [What is the MJHMP?](#) Please see [Sonoma County’s press release](#), and the [Sonoma County MJHMP 2026 Update Web Page](#) for information and background.

Sonoma County has assembled a team to update the MJHMP, which addresses hazards that impact our county and municipalities. A public survey collected input through the spring, ending June 10. [Public Survey Summary Results.](#)

A local team of stakeholders from NSCFPD, TSRA, and the community have been working on our part of the MJHMP. We’ll be providing an update as part of the [July 19, 2025 Fire Safety Update Forum](#). The complete draft plan will be available for public comment starting on September 18, 2025, for 21 days.

SOME PROJECTS/RISKS IDENTIFIED LOCALLY

- Roadside fuel reduction along narrow roads in Annapolis area
- District-wide Community Wildfire Protection Plan (CWPP)
- Feasibility studies on how to improve access to one way in/one way out roads.
- Community outreach/education on preparedness
- Improved ridgetop shaded fuel break
- Redundant water main loop on TSR

2026 SONOMA COUNTY MJHMP STATUS

- Initial identification of hazards and mitigation strategies has been completed
- The draft plan is expected to open for public comment on September 18th, for 21 days
- In-person meeting at Finley Community Center in Santa Rosa on Sept. 22nd
- Virtual county-wide meeting will occur, date/time TBD

WHAT WAS MEASURE H?

- Half-cent sales tax approved in March 2024
- Sales tax collection started October 2024
- Funds can only be used for specific purposes (wildfire prevention, emergency response, vegetation management, updates to essential equipment and facilities, etc.)
- Oversight Committee ensures compliance

HOW ARE WE USING MEASURE H FUNDS HERE?

- In NSCFPD Funds are being used to:
 1. Increase CAL FIRE career staffing to minimum of 3 on duty at all time (was 2)
 2. Hire full-time administrator for District
 3. Support the North Fire Station Expansion Project



HOW ARE THE MEASURE H FUNDS BEING USED?

\$\$ Estimates (FY 25 preliminary)

	FY 25	FY 26
Sales tax revenue:	\$1,106,795	\$1,434,000
Increased CAL FIRE:	\$426,520	\$986,918
District Administrator	\$85,945	\$131,424
Allocated to NFS Project:	\$594,330	\$315,658

HOW ARE THE MEASURE H FUNDS BEING USED?

Portion of total revenue (FY 25 preliminary)

Revenue	FY 25	FY 26
Property Tax:	\$1,965,512	\$2,024,477
Measure H Sales tax:	\$1,106,795	\$1,434,000
Rental revenue:	\$98,746	\$0
Investment:	\$115,488	\$150,578
Other:	\$28,907	\$21,512
Total:	\$3,315,448	\$3,630,567
Measure H %:	33%	39%

WHAT IS NEXT FOR THE NORTH FIRE STATION?

- NFS Expansion Project:
 - Make station 24x7 residential station
 - Increase/improve apparatus and equipment storage
 - Provide administrative workspace
 - Provide better training space



WHY IS THIS NEEDED?

- Cannot staff 24x7 except for CAL FIRE
- Need more apparatus/equipment space
- Need safer/cleaner environment for responders
- Minimal workspace for admin staff
- The CAL FIRE station is running out of room

WHAT ARE BENEFITS?

- Shifting NSC's contract CAL FIRE staff to NFS gives 24x7 response from two locations
- Allows for overnight coverage by volunteers when needed
- Cleaner/safer environment for responders

WHAT ARE BENEFITS?

- **More space for apparatus, tools, and equipment**
- **Larger more flexible training room that can be a regional resource**
- **Adequate workspace for admin staff and officers**

WHERE ARE WE IN THE PROJECT?

- NSCVFA has committed \$250K (from donations!) for initial studies and design work
- Biological, Geological, Archeological, Septic etc. studies almost complete
- Architect Doug Thompson contributed initial design and planning assistance pro bono
- Conceptual drawings with early approval from TSRA Design Committee.

PROJECT TEAM

- Project Manager Eric Agnew
- Architect Doug Thompson
- District Administrator Daymon Doss
- NSC Volunteers and CAL FIRE staff: (Chiefs Plakos and Breier, Captain Plakos, Captains Miller, Briant and Martinson), and others.

WHAT ARE WE BUILDING?

- We've talked about the Why.
- Architect Doug Thompson will take us through the What (our conceptual design)

SITE PLAN



OVERALL PROJECT AREA



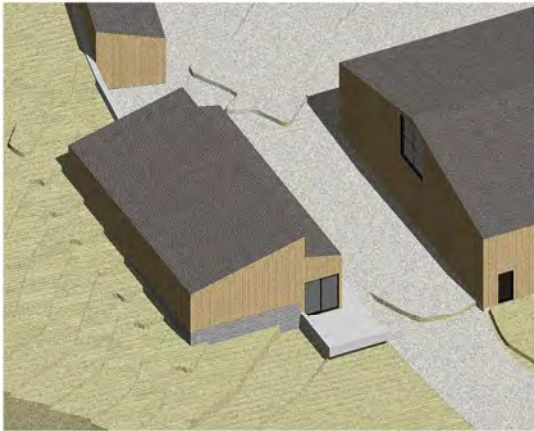
BUILDING MODELS



TRAINING CENTER VIEW FROM EAST - AFTERNOON SUMMER SUN



BARRACKS VIEW FROM NORTH - AFTERNOON SUMMER SUN

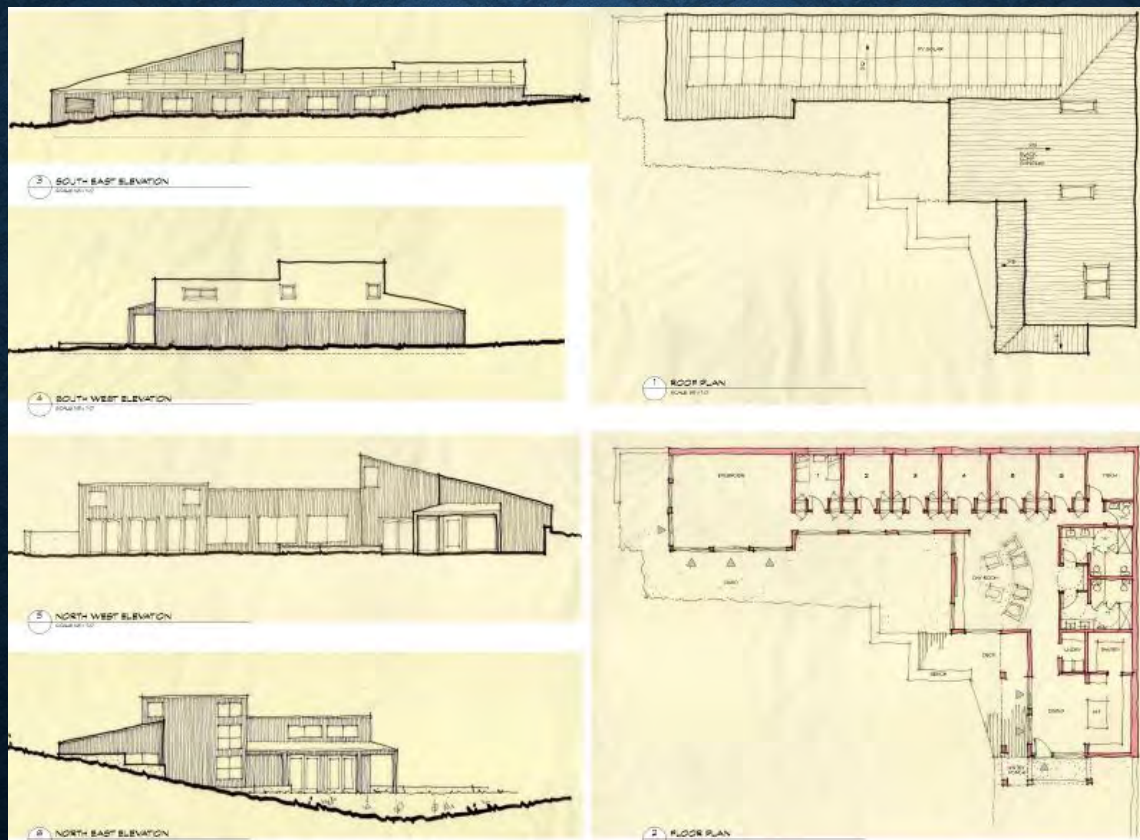


TRAINING CENTER VIEW FROM EAST - AFTERNOON SUMMER SUN

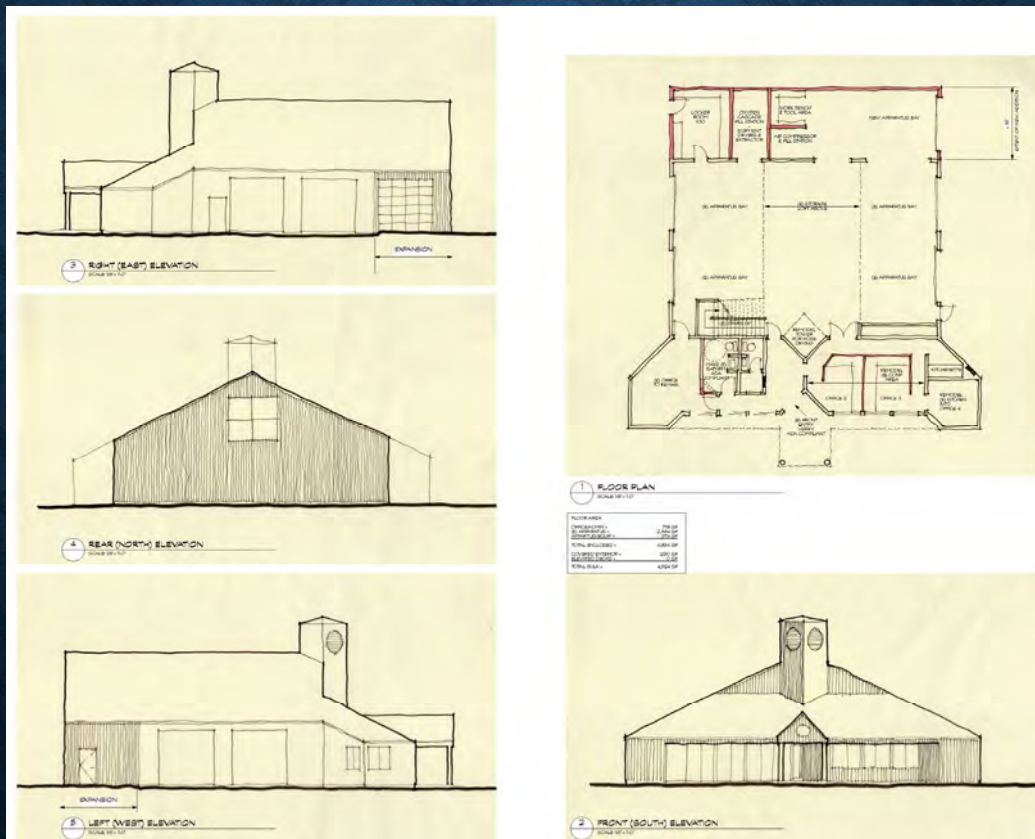


BARRACKS VIEW FROM WEST - MORNING SUMMER SUN

ELEVATION DRAWINGS OF BARRACKS



ELEVATION DRAWINGS OF MAIN STATION



OVERALL PROJECT AREA



SITE PLAN



VIEWS FROM HIGHWAY ONE



WHAT'S NEXT?

- Detailed cost estimate is in progress
- Financial feasibility study is in progress
- Will evaluate what components can be done
- Determine funding sources (Grants? Bonds? Donation drive?)

WHAT'S NEXT?

- Decisions: Can we do it? How much of it?
When? Phases?
- We welcome your thoughts
- We will keep the community informed on
progress

VISIT US ON THE WEB

North Sonoma Coast Volunteer Firefighter Association

Serving the communities of The Sea Ranch, Annapolis, and Stewarts Point since 1973

HOT NEWS

2024 Newsletter
2025 Picnic Photos

BURN INFO

THANK YOU FOR SUPPORTING OUR PICNIC!

The 2025 TSRVFD [Memorial Day Weekend BBQ Picnic](#) was held on Sunday, May 25th at One-Eyed Jack's. We had a great time and we hope you did too. We want to thank the many volunteers who came out to make the event a success, and our generous local businesses and partner agencies for contributing equipment and supplies. It takes a team!

<https://tsrvfd.org>

North Sonoma Coast Fire Protection District

Serving the communities of The Sea Ranch, Annapolis, and Stewarts Point

HOT NEWS

Hazard Mitigation Plan Update
FY25/26 Budget and Prop 4 Limit Hearings

BE PREPARED!

Know Your Evacuation Zone
Emergency Information

MEETING AGENDA

MEETINGS

Board of Directors:
Wednesday June 18, 2025
10:00 a.m.

<https://nscfpd.org>

THANK YOU FOR YOUR TIME!



COMMENTS?

Questions

?

?

?

?

